

# Annual Report 2021



**COLUMBIA SHUSWAP  
INVASIVE SPECIES  
SOCIETY**



## A message from our Executive Director:



It was another wild year with a heat wave, wildfires and the Covid-19 pandemic continuing impacts in the Columbia Shuswap and across BC.

As you'll read about in the coming pages, our team accomplished quite a lot and we found some new and interesting ways to reach our target audiences, while staying safe.

We celebrated successes, such as many invasive plants treated and no invasive zebra and quagga mussels found across the region!

We are extremely grateful to generous funders and partners.

A huge thank you as well to Board members, volunteers and members who continue to support CSISS and our goals of protecting this region's biodiversity from the impacts of invasive species.

Finally, a huge thank you to the staff of CSISS - they have remained dedicated and enthusiastic throughout the year!

**- Robyn Hooper**

# Executive Summary

**Mission**



## Project Area:

Salmon Arm, Revelstoke, and Golden Invasive Plant Management Areas (IPMAs) and entire Columbia Shuswap Region.

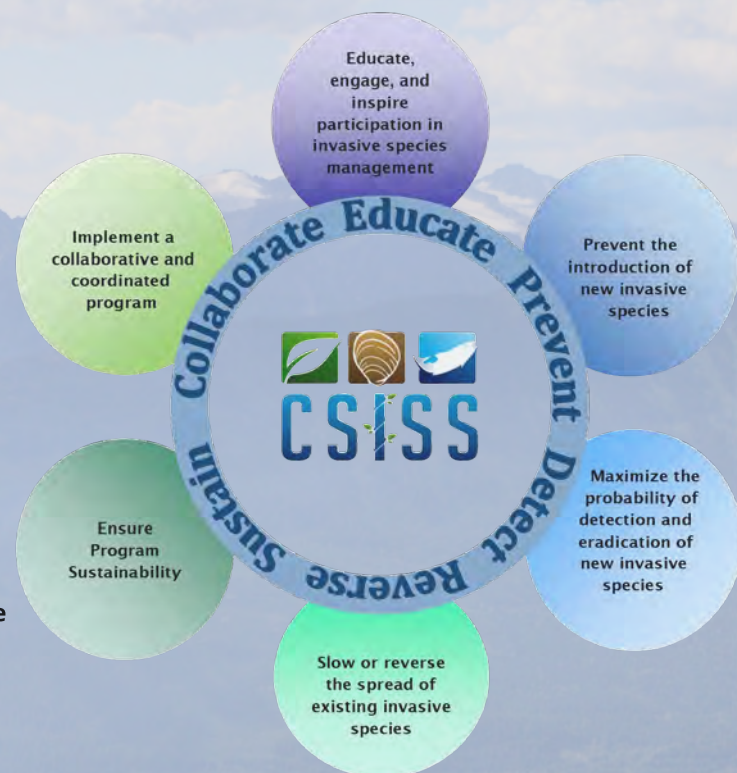
**Mission Statement:** The Columbia Shuswap Invasive Species Society is a network of partners who facilitate the prevention, reduction and management of invasive species through collaboration, engagement, and education.

## The objectives of the Society are:

b) To establish and operate invasive species management programs.

a) To educate and engage public, private landowners, land and aquatic managers, First Nations and others about invasive species and their impacts.

c) To do all other things as are incidental and ancillary to the attainment of the above purposes.



**Vision Statement:** The environment, economy and society of the Columbia Shuswap region are protected from the adverse impacts of invasive species.



# Terrestrial Field Program

## 2021 Terrestrial Program Highlights

Maximizing the Probability of Detection and Eradication of New Invasives

**Completed 850  
targeted invasive  
plant surveys**



**Reached over 1 324  
landowners  
regarding invasive  
plant management**



**Completed  
mechanical  
treatment at 47  
priority locations**



**Administered 4  
herbicide spray  
contracts, treating  
54 priority sites**

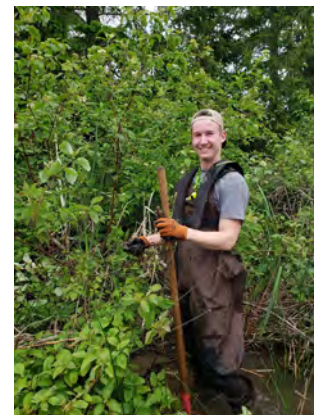


 **Responded to 130 requests for  
information and 37 invasive plant  
reports**

**Installed 'Do Not  
Mow' and 'Do Not  
Compost' signage  
across the region**



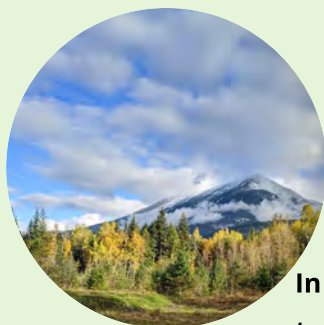
**Supported 7  
weed pulls with  
6 partner  
organizations**





# Project Updates

## Blanket Creek Provincial Park Restoration Project



In 2021, the collaborative restoration project in Blanket Creek Provincial Park continued. The work, guided by a restoration plan prepared by Shearing Environmental Consultants Ltd, targets a former gravel pit impacted by invasive plants. Each week throughout the dry and hot summer, CSISS staff watered the native trees and shrubs planted in the fall of 2020.



**In fall of 2021, restoration efforts included the planting of 441 shrubs and trees and 100 cottonwood stakes. An area of 2300 m<sup>2</sup> was seeded.**

**Through the removal and/or displacement of invasive plants and the re-establishment of native species, the project aims to encourage natural regeneration of local habitats and promote a resilient native plant assemblage for the future.**



**We are thrilled with the incredible efforts of volunteers and can't wait to continue this initiative next spring!**

## Yellow Flag Iris sites around the Shuswap



CSISS completed detailed site inventory for invasive yellow flag iris in sites around the Shuswap, including sites at : White Lake, Turner Creek, McGuire Lake, Gardom Lake and Little White Lake

The Shuswap Trails Alliance crews mechanical treated infestations of yellow flag iris at White Lake as highest priority, and sites at Turner Creek and McGuire Lake. CSISS staff and ISCBC Stronger BC Team completed dead-heading at Little White Lake to prevent seed spread. CSISS staff completed monitoring at each waterbody to ensure successful treatment.

**The Invasive Species Council of British Columbia (ISCBC) supported the Project with Stronger BC Action teams completing work on both projects.**

**These projects are made possible from the funding support of BC Parks, Environment and Climate Change Canada, Habitat Conservation Trust Foundation, and others.**



This project was undertaken with the financial support of:  
Ce projet a été réalisé avec l'appui financier de :



Environment and  
Climate Change Canada

Environnement et  
Changement climatique Canada





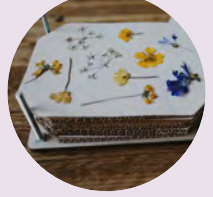
# Education and Outreach Program



Outreach activities in 2021 were adapted to suit the COVID-19 situation and changed accordingly throughout the year. Many aspects of the program were moved online and small group training sessions replaced large group events.

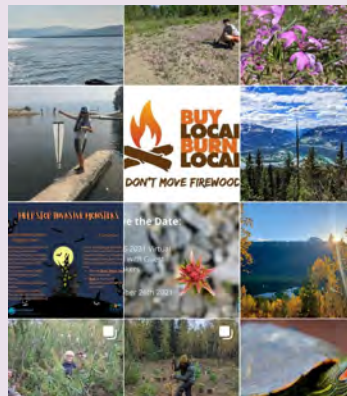
CSISS-hosted workshops included:

- Invasive Plant and Management Workshop: Trails and Recreation Areas Focus
- PlantWise and Pollination Networking for your Garden
- Invasive plant ID workshop: Yellow Flowers)
- Invasive plant identification walk as part of Revelstoke Wildflower Festival (in-person August 2021)



The Salmon Arm Bay Nature Enhancement Society (SABNES) removing Bittersweet nightshade from the Salmon Arm foreshore trail.

## Communications & Social Media



578 followers on Facebook with a reach of 34 697

943 Followers on Instagram



## Aquatic Outreach



Hosted 26 boater outreach events

Engaged directly with 490 boaters



Visited 5 pet stores with 'Don't Let it Loose' messaging

New billboard installed east of Golden BC





# Aquatic Field Program

Thirteen water-bodies were monitored for invasive Zebra or Quagga mussels (*Dreissena pilmorphs* or *bugensis*). A further 8 sites were monitored from adult mussels only.

166 plankton samples were collected and analyzed.

No invasive mussels were detected within the region.

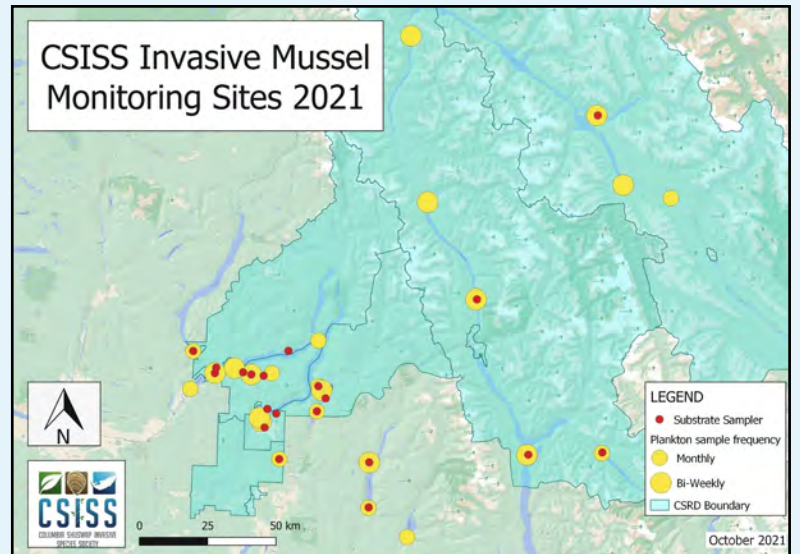
13 water bodies



24 locations



166 samples



24 sites were monitored for aquatic invasive plants.

No new infestations were detected.

Public reports of American bullfrogs at 2 sites in 2020 resulted in surveys this season. At a remote site near Falkland, a song-meter was used to record potential calls, and at a busy campground on Lake Revelstoke, campers were shown images and recordings and asked if they had seen or heard bullfrogs.

No evidence of American Bullfrogs was discovered at either site.





# Finances and Funding

**Funding in 2021:**  
over \$360,000 in  
new revenue  
confirmed

**In Kind  
Contributions:**  
over \$7000

**# Funders**  
**18**

**Expenses in  
2021**

**CSISS Programs    Administration**  
**90%                      10%**





# Acknowledgment of Contributions in 2021

Ministry of Forests, Lands, Natural Resource Operations and  
Rural Development (FLNRORD)

Employment and Social Development Canada (Canada Summer  
Jobs Program)

Environment and Climate Change Canada

Ministry of Transportation and Infrastructure

Habitat Conservation Trust Foundation

Columbia Shuswap Regional District

BC Community Gaming Grant

Shuswap Watershed Council

City of Salmon Arm

Parks Canada

BC Hydro

BC Parks

Nature Trust of BC

Columbia Basin Trust

Shuswap Community Foundation grant

Invasive Species Council of British Columbia

## **Other Contributions received from:**

Shuswap Waterfront Owners Association

Revelstoke Accommodation Association

Plus other small donations, in kind supports  
and honorariums

See CSISS 2021 Financial Report for more details.

## **In Kind Contributors:**

BC Parks - Boat use for ZQM sampling

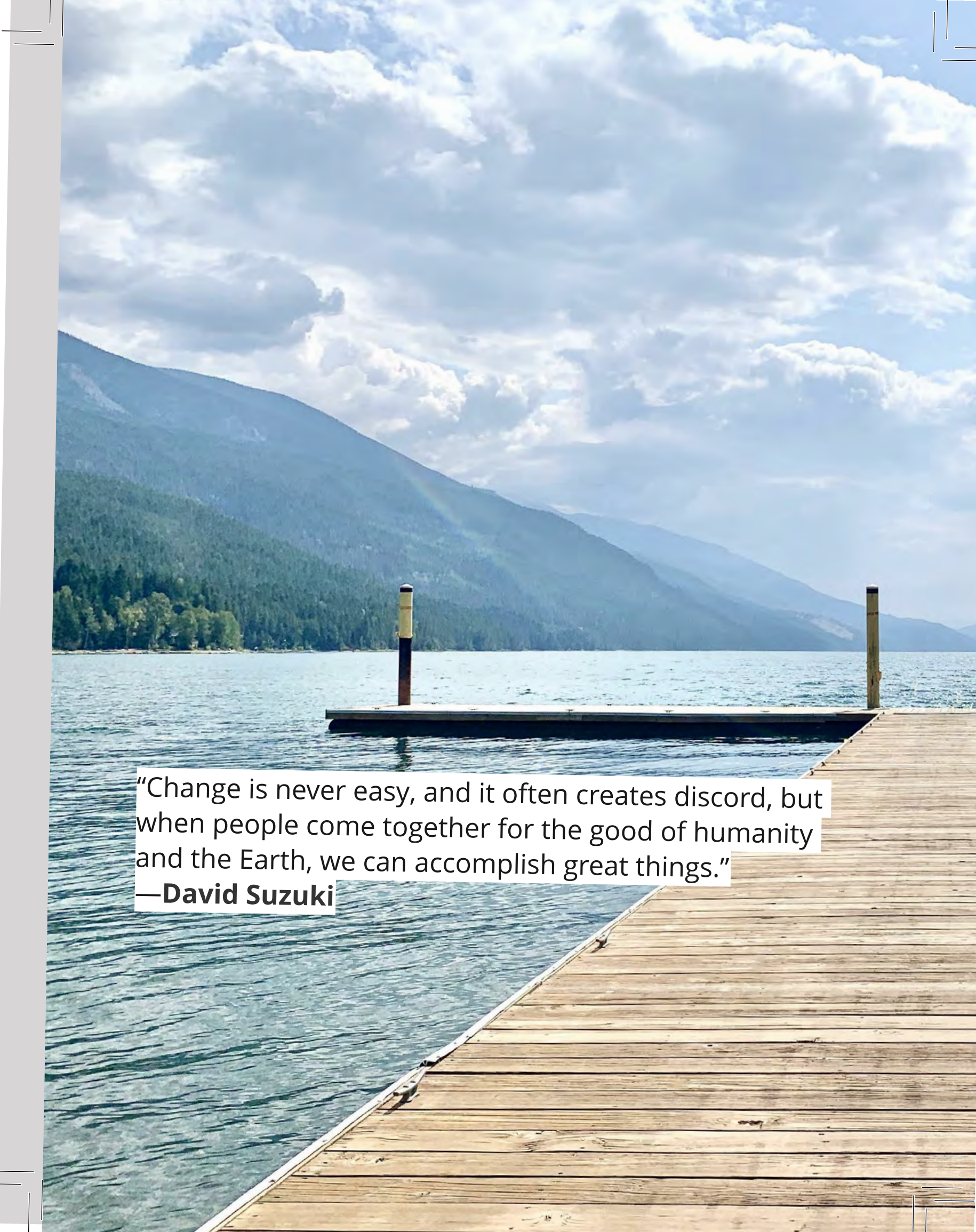
Wildsight Revelstoke, Revelstoke Tree Care and Jake  
and Jay- Blanket Creek Provincial Park Restoration

ISCBC StrongerBC Teams (Salmon Arm and Vernon)

Numerous weed pull volunteers

Numerous in-kind professional support



A scenic landscape photograph featuring a wooden dock in the foreground, extending from the bottom right towards the center. The dock is made of light-colored wooden planks. In the middle ground, a small, rectangular wooden pier floats on the calm, blue water. Two vertical posts, one yellow and black and the other plain wood, are visible on the pier. The background consists of a range of mountains covered in dense green forest, with some peaks appearing hazy. The sky is filled with large, white, fluffy clouds, and a faint rainbow is visible on the left side of the mountain range.

"Change is never easy, and it often creates discord, but when people come together for the good of humanity and the Earth, we can accomplish great things."

—**David Suzuki**



# Team and Board of Directors

## **CSISS Board of Directors 2020**

Hamish Kassa- *Chair*

Chris Chochran- *Vice Chair*

Laurel Corrigan- *Director*

John Braisher- *Director*

Adam Croxall- *Director*

Chris Gill- *Director*

Diane Millar- *Director*

Peter Tarleton-*Director*

## ***Thank you to those who finished terms in October 2021:***

Warren Fortier

Darren Komonoksi

Joe McCulloch

## ***Welcome to New Directors in October 2021:***

Jeromy Schuetze- *Director*

Erin Vieira-*Director*

## **CSISS Staff 2021**

Robyn Hooper- *Executive Director*

Laura Gaster- *Field Operations Program Coordinator*

Sue Davies- *Aquatic Invasive Species Program Coordinator*

Kim Kaiser- *Education and Outreach Program Coordinator*

Kathleen Meszaros- *Invasive Species Program Assistant*

Jess Booth- *Outreach Program Assistant*





1-855-PUL-WEED (785-9333)



[columbiashuswapinvasives.org](http://columbiashuswapinvasives.org)



[info@columbiashuswapinvasives.org](mailto:info@columbiashuswapinvasives.org)



[@ColumbiaShuswapInvasives](https://www.facebook.com/ColumbiaShuswapInvasives)



[@columbiashuswapinvasives](https://www.instagram.com/columbiashuswapinvasives)



[@CSISS\\_Invasives](https://twitter.com/CSISS_Invasives)