



# Columbia Shuswap Invasive Species Society

## Year End Report 2015

Prepared by:

*Natalie Stafl, Executive Director*

*Robyn Hooper, Program Manager*

*Laura Gaster, Program Assistant*

*Columbia Shuswap Invasive Species Society*

*P.O. Box 2853, Revelstoke, BC V0E 2S0*

*[info@columbiashuswapinvasives.org](mailto:info@columbiashuswapinvasives.org)*

*December, 2015*

## ACKNOWLEDGMENTS



Figure 1: CSISS 2015-16 Board Directors and Staff (not pictured Emily Spiler, Margaret Gibson, Darren Komonoski.)

The accomplishments and success of this organization can be attributed to our dedicated staff, Board Directors, the generous funding agencies that contributed to the project, our expert contractors, consultants and numerous volunteers.

Special thanks to our 2014-2015 outstanding Board Directors whose dedication and direction has continued to guide the CSISS on its trajectory of rapid growth: Hamish Kassa (CSRD), Joyce deBoer (Wildsight Golden), Chris Cochran (Town of Golden), Catherine MacRae (MFLNRO), Bryan Chruszcz (Parks Canada), Darren Komonoski (City of Revelstoke), David Rooney (Illecillewaet Greenbelt Society), Bruce Husband (Shuswap Agricultural Strategy Group), Margaret Gibson (Independent Biologist) and Adam Croxall (BC Hydro). We are excited to welcome Diane Millar from MFLNRO to the 2015-2016 CSISS Board (Figure 1).

We would like to thank Emily Spiler, CSISS Summer student, for her exceptional efforts engaging residents across the CSRD in invasive species outreach activities.

We are extremely grateful to the Columbia Basin Trust (CBT), Ministry of Forests, Lands and Natural Resource Operations (MFLNRO), Ministry of Transportation and Infrastructure (MOTI), the Columbia Shuswap Regional District (CSRD), Canada Summer Jobs Program and the Invasive Species Council of BC for providing funding for this project. Additional thanks are due to the City of Revelstoke, City of Salmon Arm, Town of Golden, Central Kootenay Invasive Species Society, East Kootenay Invasive Species Council, Parks Canada, the Illecillewaet Greenbelt Society and Wildsight Golden for their support in-kind to the CSISS.



## EXECUTIVE SUMMARY

April 2015 marked the start of the third operational season of the Columbia Shuswap Invasive Species Society (CSISS). Since its inception, the Society has actively pursued the goals identified in the 2013 CSISS Strategic Plan:

- 1) *Implement a collaborative and coordinated program*
- 2) *Educate, engage and inspire residents and others to participate in invasive plant management*
- 3) *Prevent the introduction of new invasive species*
- 4) *Maximize the probability of detection and eradication of new invasive species*
- 5) *Slow or reverse the spread of existing invasive species and reduce their harmful impacts*
- 6) *Ensure program sustainability*

In 2015, the CSISS strengthened and expanded its network of partners and furthered its objective to deliver **collaborative and coordinated programs** in the CSRD. This was achieved through its partnerships with various levels of government, the Invasive Species Council of BC, other regional invasive species groups, local stakeholders, residents and NGOs. Over 47 new and existing partnerships were established and strengthened.

**Educating and engaging local residents** continued to be a priority in 2015. The CSISS presented to and conducted targeted outreach to various stakeholders, landowners and First Nations. Additionally, the CSISS has supported numerous community events, hosted training workshops, re-designed and replaced outreach materials and banners, and engaged youth across the region through presentations and outdoor-based learning. Through these outreach activities, the CSISS directly engaged with over 2,960 people in the region, 986 of them youth.

The CSISS approached 18 garden centres and nurseries and presented the “PlantWise” message to various target groups to **prevent new invasives from establishing in the region**. CSISS staff also actively participated in the “Clean-Drain-Dry” Program, spreading the message to youth, local residents, water stewardship and boating groups to help prevent aquatic invaders such as Zebra/Quagga Mussels. Since January 2015, the CSISS was mentioned in 28 local news, radio and web pieces. Outreach through social media was also emphasized with an average of 1-2 posts per week on Facebooks and 127 ‘likes’ on the CSISS page. Through this media coverage the CSISS raised awareness of invasives and the importance of prevention activities.

In 2015, the CSISS hired an AIS contractor, Chris Harkness to inventory critical and high priority water bodies for aquatic invasive plants and Zebra/ Quagga mussel veligers to **maximize the probability of detection and eradication of invasives**. CSISS staff also targeted areas across the region for terrestrial invasive plant surveys, greatly enhancing our knowledge of the distribution and abundance of various high priority species in the region.

CSISS staff worked with key partners to **slow and reverse the spread of invasive species**. The CSISS hosted an Industrial Vegetation and Noxious Weed Applicator course in 2015 to train staff and build capacity among program partners. To enhance coordinated control efforts, CSISS staff collaborated with various land managers to ensure accurate, up-to date priority plant targets for active control. During the 2015 field season, CSISS staff documented and entered over 382 invasive plant records into IAPP. Over 78 volunteers participated in 6 weed pulls across the region, pulling over 125 bags of weeds!

In 2015, the CSISS employed 4 staff, 1 AIS contractor and added nearly \$50,000 to its operating budget. Increasing in-house capacity and entering into multi-year funding agreements enhanced the overall **program sustainability**. Thanks to dedicated staff, diligent Directors, knowledgeable partners and inspired volunteers, the CSISS expanded its programming and made significant progress on each goal identified in the 2013 CSISS Strategic Plan.

# CONTENTS

<b>Acknowledgments .....</b>	<b>2</b>
<b>Executive Summary .....</b>	<b>3</b>
<b>Introduction .....</b>	<b>5</b>
<i>Project Area.....</i>	<i>5</i>
<b>Goal 1: Collaborative and Coordinated Programming.....</b>	<b>6</b>
<i>Aquatic Invasive Species Partnerships.....</i>	<i>6</i>
<b>Goal 2: Educate, Engage and Inspire.....</b>	<b>7</b>
<i>Media Coverage.....</i>	<i>8</i>
<i>Website and Social Media.....</i>	<i>9</i>
<i>Community Outreach .....</i>	<i>9</i>
<i>Youth Outreach and School Programs .....</i>	<i>10</i>
<i>Workshops and Events .....</i>	<i>11</i>
<i>First Nations Engagement.....</i>	<i>12</i>
<b>Goal 3: Prevent the Introduction of New Species.....</b>	<b>12</b>
<i>Plantwise Program .....</i>	<i>12</i>
<i>Clean Drain Dry Program.....</i>	<i>13</i>
<i>Don't Let It Loose Program .....</i>	<i>14</i>
<i>Play, Clean, Go Program .....</i>	<i>14</i>
<b>Goal 4: Maximize the Probability of Detection and Eradication of New Invasives .....</b>	<b>14</b>
<i>Invasive Species reports .....</i>	<i>15</i>
<i>Targeted Invasive Plant Surveys .....</i>	<i>15</i>
<i>Surveys of CSRD Owned Land and Properties .....</i>	<i>17</i>
<i>Ministry of Transportation and Infrastructure Surveys .....</i>	<i>18</i>
<i>Aquatic Invasive Species Surveys .....</i>	<i>19</i>
<b>Goal 5: Slow and Reverse the Spread and Minimize the Impact of Existing Invasives.....</b>	<b>20</b>
<b>Goal 6: Program Sustainability.....</b>	<b>21</b>
<b>References .....</b>	<b>21</b>
Appendix A: CSISS Staff and Board Directors 2015 .....	23
Appendix B: Events Attended by CSISS 2015.....	24
Appendix C: Media Events Highlighting CSISS 2015.....	27
Appendix D: Collaboration, Workshops and Training Opportunities .....	28

# INTRODUCTION

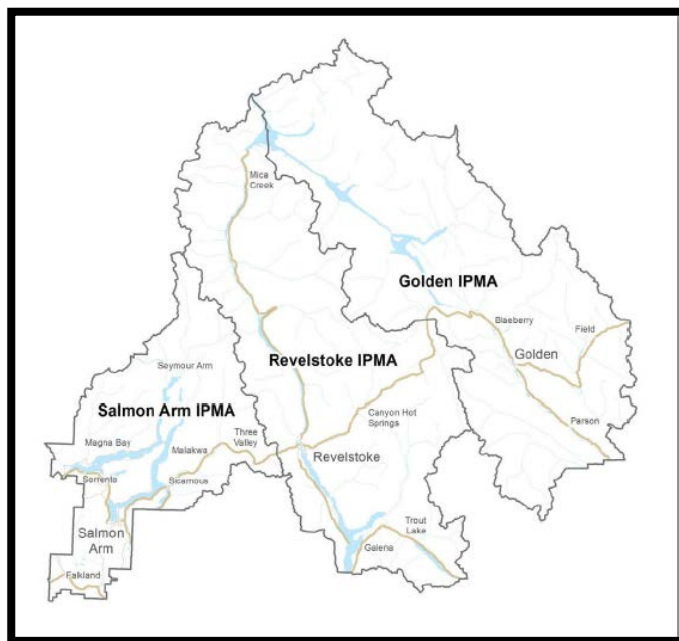
The CSISS was established in April of 2013 after a series of meetings and consultations with land managers, residents and other stakeholders with the aim to develop a collaborative and coordinated approach to invasive species management in the region. The CSISS joined a network of 13 regional invasive species groups in BC. These groups work in cooperation with each other, the Invasive Species Council of BC (ISCBC) and government agencies to inspire action, coordinate management and prevent the spread of invasive species within their jurisdictions.

Based on its constitution, the objectives of the CSISS are:

- To educate and engage public, private landowners, land and aquatic managers, First Nations and others about invasive species and their impacts.
- To establish and operate invasive species management programs.
- To do all other things as are incidental and ancillary to the attainment of the above purposes.

The summer of 2015 marked the Society's third season in operation. Having had two years previous to develop a platform of services, strategic and operational plans and increase its presence across the region, the CSISS was able to greatly expand its programming in 2015. The CSISS staff team doubled from two in 2014 to four staff members in 2015, greatly increasing the organization's ability to engage community members and residents as well as invest a presence in smaller communities across the regional district. The CSISS built and expanded connections within local communities and filled knowledge gaps regarding invasives on the landscape. In 2015, the CSISS also expanded its Aquatic Invasive Species (AIS) programs, delivering the Clean, Drain, Dry Program in partnership with the ISCBC and working with Columbia Basin groups to prioritize and sample high priority water bodies for Zebra/Quagga mussel veligers and aquatic invasive plants.

## PROJECT AREA



The jurisdiction encompassed by the Society includes the boundaries of the Columbia Shuswap Regional District (electoral areas A, B, C, D, E and F). The CSISS operational area has been further divided into three Invasive Plant Management Areas (IPMAs) for planning purposes (Craig, 2013). This broad, ecologically diverse area includes the Ponderosa Pine (PP), Interior Douglas Fir (IDF), Interior Cedar Hemlock (ICH), Montane Spruce (MS) and high elevation Engelmann Spruce-Subalpine Fir (ESSF) biogeoclimatic zones (Craig, 2013).

Figure 2: The CSISS operating area, including the three IPMA boundaries in the region (Craig, 2013).

## GOAL 1: COLLABORATIVE AND COORDINATED PROGRAMMING

The CSISS maintains a priority plant list for each Invasive Plant Management Area within the CSRD (Figure 2) to help partners coordinate programming and treatments. In addition to the plant lists, the CSISS continues to seek and engage partners to participate in collaborative planning and management. In doing so, the CSISS has become the “One-stop-shop” for invasives in the CSRD and is the point of contact and lead on many invasive species-related issues in the region.

To maximize efficiencies and ensure program sustainability, the CSISS collaborated with invasive species groups within the Columbia Basin, regional committees across the province, the Invasive Species Council of BC (ISCBC), the Columbia Basin Trust (CBT) and various stewardship groups and NGOs. The CSISS currently partners with over 47 groups. These partnerships expanded successful programs (PlantWise, Clean-Drain-Dry, Play Clean Go, Don’t Let It Loose) and secured joint funding (Columbia Basin Collaboration).

The CSISS has been working in collaboration with the East Kootenay Invasive Species Council (EKISC), Central Kootenay Invasive Species Society (CKISS) and Northwest Invasive Plant Council (NWIPC) to implement coordinated invasive species strategies within the Basin. This includes designing shared outreach materials to maintain consistent messaging throughout the region, collaborating on advertising and promotion, and attending regional meetings and training opportunities. For example, in 2015 new outreach banners (aquatic and terrestrial) and an aquatic car-wash locations rack card were developed through this Columbia Basin regional collaboration.

To remain up to date on invasive species issues and developments in BC, the CSISS Executive Director and Program Manager attended the annual ISCBC Forum as well as the North American Invasive Species Management Association conference in Vancouver, BC along with the CSISS Chair and Program Assistant. CSISS staff attended and/or hosted more than 26 regional meetings, training opportunities and workshops (Appendix D).

CSISS staff participated in the Invasive Species Council’s PlantWise and Clean-Drain-Dry training and delivered the programs throughout the region. The CSISS also helped train and provide resources to the Wildsight Weed Coordinator. To enhance collaboration, CSISS staff participated in conference calls between regional invasive species groups, the BC government and the ISCBC.

## AQUATIC INVASIVE SPECIES PARTNERSHIPS

The 2015 season was a large step forward on the Aquatic Invasive Species (AIS) front both for the CSISS and for the Columbia Basin as a whole (Figure 3). In the spring, CSISS Staff and Board Chair attended a Watercraft Inspection and Decontamination Training in Lake Mead, Nevada to learn first-hand how to inspect, identify and decontaminate boats infested with Zebra/ Quagga Mussels. The CSISS Executive Director and Board Chair participated in an AIS advisory committee during the development of the Canadian Columbia Basin AIS Program Framework with collaboration and input from numerous key partners (Craig, 2015). The CSISS Program Manager helped develop a Columbia Basin AIS workplan at a spring workshop with the Columbia Basin invasive species teams.

CSISS staff have been implementing the AIS Framework within the Columbia Basin in collaboration with the EKISC, the CKISS and the NWIPC with support from the Columbia Basin Trust. This involved developing AIS priority ranking matrices and carrying out AIS surveys in priority water bodies, as well as collaborating on AIS outreach



programs, including outreach materials for the Basin, delivering the ISCBC Clean, Drain, Dry Program, as well as conducting outreach at boat launches and marinas. Close communication was maintained with the Ministry of Environment to coordinate AIS efforts. The Columbia Basin Trust generously gifted a Boatwash and Decontamination Station to the CSISS to help aid prevention efforts and halt the spread of AIS (Figure 3).



Figure 3: Columbia Basin partners attend a press release hosted by the CBT celebrating the announcement of increased funding for Boat Inspection and Decontamination stations in the Columbia Basin. The CSISS received a similar unit this fall.

## **GOAL 2: EDUCATE, ENGAGE AND INSPIRE**

The CSISS continues to educate, engage and inspire residents and others to participate in invasive species management. CSISS staff received twice the number of requests for presentations in the past year compared to years previous. In addition, education and awareness activities have more than doubled since 2014 (Figure 4). Special effort was focused on attending events and hosting displays in smaller, rural communities across the regional district. As well, the CSISS Program Manager presented to the four new City Councils in Salmon Arm, Sicamous, Revelstoke and Golden, and contacted all First Nations in the region.

In 2015, CSISS staff attended over 108 community events, delivered 16 school presentations, distributed 6 e-newsletters, hosted 8 workshops and training events, visited 18 garden centres, 30 boat launches and supported 6 community weed pulls. This led to direct interactions with 2,960 people, 986 of whom were youth (Figure 5). The CSISS outreach programs continue to be reviewed and evaluated for improvements annually. After presentations and workshops, CSISS staff distributed feedback forms to participants and will work to incorporate suggestions for the 2016 operational season.

Table 1: Community Events and Meetings Attended by CSISS Jan- Oct 2015

Number of Events	# Attendees	Direct Interactions
29 Youth Events <i>(9 within Columbia Basin, 16 at Schools)</i>	1,065	986
6 Weed Pulls <i>(2 within Columbia Basin)</i>	78	78
83 Aquatic-related Outreach events <i>(25 within Columbia Basin)</i> <i>(30 Boat launches visited, 10 within Columbia Basin)</i>	5,457	2,265
18 Garden Centres visited with Plant Wise outreach <i>(7 within Columbia Basin)</i>	20	20
<b>40 Events total in the Columbia Basin</b>	<b>2,072</b>	<b>1,078</b>
<b>112 Events total for CSISS 2015</b>	<b>6,221</b>	<b>2,960</b>

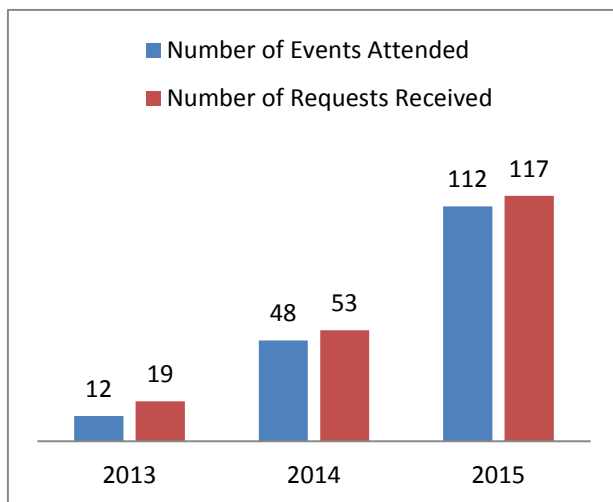


Figure 4: Chart showing the number of Events CSISS attended and requests for presentations/information received from 2013-2015

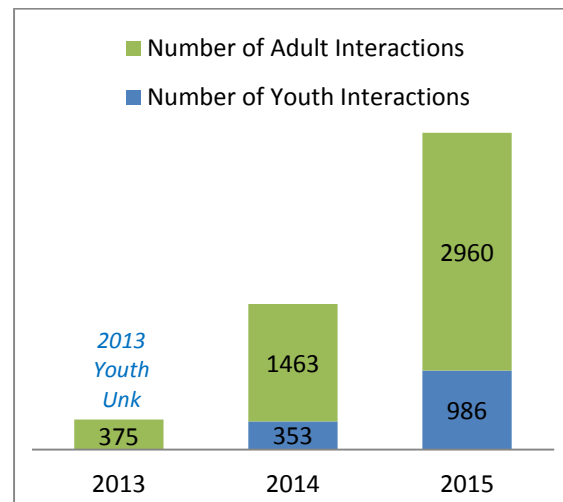


Figure 5: Chart showing total number of Adult and Youth Direct Interactions with CSISS from 2013-2015.

## MEDIA COVERAGE

Since January, the CSISS has delivered 5 press releases, 5 full articles, and has been mentioned in 28 news, radio and web pieces including: The Voice of the Shuswap Radio (2 program interviews), The Society for Ecological Restoration, Salmon Arm Market News, The Columbia Valley Pioneer, Castanet Kelowna, The Townsman, Lakeshore News The Kootenay Advisor, Columbia Basin Environmental Educators Network (CBEEN), Columbia Basin Newsletter, The Vernon Morning Star, Salmon Arm Friday AM, Revelstoke Times Review, Revelstoke Mountaineer, The Salmon Arm Observer, the Revelstoke Current, the Golden Star, the North Shuswap Kicker, Friday AM, Columbia Shuswap EZ Rock, Stoke FM, as well as multiple websites, Facebook pages and E-newsletters (See Appendix C for a full listing of media interactions.) Through these platforms, the CSISS raised awareness of invasives and the importance of preventing their establishment and spread.



## WEBSITE AND SOCIAL MEDIA

CSISS staff have been updating and utilizing the CSISS website ([www.columbiashuswapinvasives.org](http://www.columbiashuswapinvasives.org)) as a platform to engage the public and land managers and enable them to connect to events and local information pertaining to invasive species management (Figure 6). The homepage was updated approximately twice monthly during the summer to advertise current events and has been viewed over 5,584 times this year. The website includes general information about priority invasives, how to get involved, a method of contacting the CSISS and news of upcoming events and meetings. The CSISS also hosts a Facebook page and posts social media updates (1-2 times/ week in the summer) relevant to the organization in order to reach a larger audience and advertise events. The CSISS has also begun delivering quarterly e-newsletters to more than 220 recipients highlighting our local and regional events and activities.

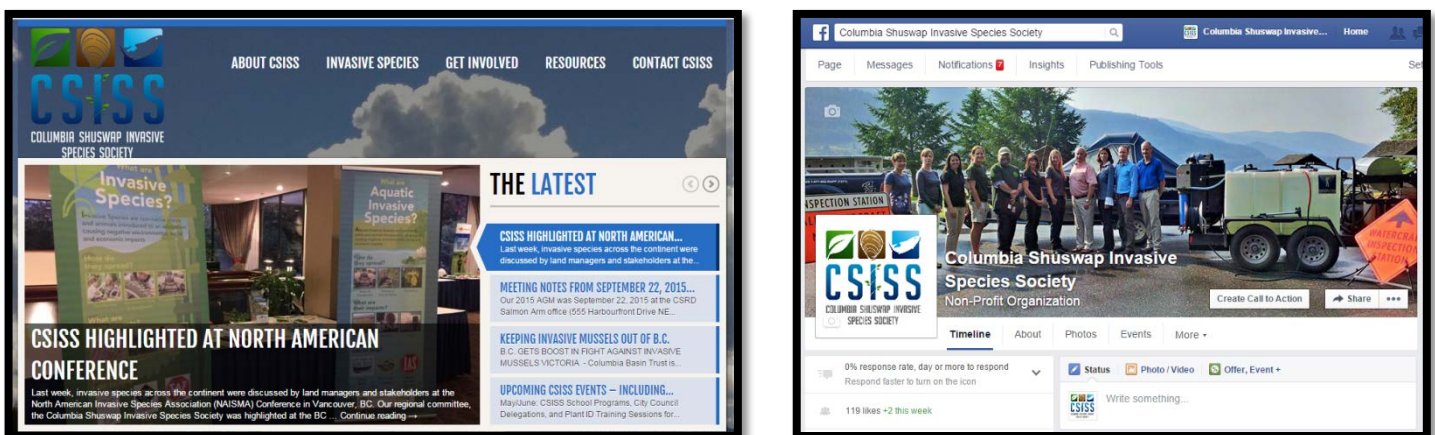


Figure 6: Image of CSISS website (left) and Facebook page (right) used to help spread the word about invasives.

## COMMUNITY OUTREACH

The CSISS partnered with numerous non-profit groups to raise awareness of invasive species in the Columbia-Shuswap region: the Wildsight Weed Crew, the North Columbia Environmental Society, White Lake Stewardship Group and Shuswap Trail Alliance and the Invasive Species Council of BC (ISCBC). CSISS outreach brochures were provided to partner organizations to distribute at workshops and information booths throughout the region, as well as at municipal offices and BC Service locations.

Through these partnerships the CSISS supported 6 weed pulls: two yellow flag iris weed pulls at Little White Lake and Gardom Lake; a community weed pull in Salmon Arm at the SABNES trail; two weed pulls with Wildsight Golden at Reflection Lake and along the Kicking Horse River; and one youth weed pull with Lady Grey Elementary School and Wildsight Golden along a popular trail network in Golden.

In addition to community weed pulls, CSISS staff set up booths at Farmers Markets and community events in Golden, Salmon Arm, Revelstoke, Falkland, Carlin, Scotch Creek, Blind Bay, Celista, and Sorrento to raise awareness of invasive species issues and educate the public on how to prevent their spread.

The CSISS also increased its efforts to reach smaller communities around the region, attending and participating in numerous events including:

- Blind Bay: Canada Day Celebrations, Girl Guides Presentation, Probus Group Presentation;
- Sorrento: Cedar Height's Breakfast Club Presentation;
- Sunnybrae: Sunnybrae Community Association Presentation;
- Sicamous: Spring Fishing Derby, Burn Out and Summer Stomp Event, Antique Boat Show;
- Canoe: Grade 8 Social Responsibility Trail Day;
- Malakwa: Shuswap Wild Wonders- School Camp;
- Skimikin: Equestrian Trail Association- Trail Maintenance and Invasives Day, and;
- Falkland: Falkland Stampede and Falkland Harvest Festival.

## YOUTH OUTREACH AND SCHOOL PROGRAMS

In 2015, the CSISS attended 27 youth specific events and directly interacted with 986 youth. Events focused on engaging and connecting youth with local, regional and provincial invasive species issues through presentations and outdoor-based learning (Figure 7). Youth specific events included: native shrub regeneration and tree plants, trail maintenance days, weed pulls, summer camps, Girl Guide presentations, fishing derbies, and the Kokanee Fish Festival.

From early April to October 2015, the CSISS delivered 16 school presentations which included classroom presentations, field trips and activities. Six secondary school presentations took place at Sicamous Secondary, Eagle River Secondary and Salmon Arm Secondary Schools, with teachers re-booking CSISS staff for future presentations. Ten primary school presentations took place at Alexander Brown Elementary, Bastion Elementary, Lady Grey Elementary, Columbia Park Elementary and Begbie View Elementary Schools. The CSISS also partnered with the Columbia Basin Environmental Education Network (CBEEN) to increase connection with local groups and remain up-to-date with environmental initiatives.



Figure 7: Engaging and connecting youth with invasive species issues. Girl Guide presentation (left) and elementary school presentation (right).

## WORKSHOPS AND EVENTS

To build capacity amongst partners, interested residents and stewardship groups, the CSISS hosted various workshops and training opportunities. These efforts led to an increase in reporting, awareness and identification of invasive species in our region (Figure 8).

In April, the CSISS held a mapping workshop for Columbia Basin invasive species groups, led by Clare Greenberg from Sea to Sky Mapping. Participants used iPads and GIS Pro software to enter and review data in the field, export data to a desktop and create maps for presentations and reports. The CSISS hosted Catherine MacRae, from MFLNRO to deliver a one day workshop on Bio-control identification and monitoring. This was well attended by local residents, other invasive species groups and various land managers. In August, the CSISS hosted a four-day Industrial Vegetation and Noxious Weed applicator's course with expert consultant, Stuart Craig. The course had a total of seven participants from CSISS and Parks Canada and reviewed relevant legislation and practical knowledge associated with applying, overseeing and monitoring herbicide use for noxious weeds and invasive plants.

In spring and early summer, the CSISS delivered workshops to increase invasive plant identification skills and best management practices in the region. The CSISS provided training to the Golden Wildsight Weed Coordinator at the start of their operational season and continued to support the Wildsight Weed Coordinator throughout the season. CSISS staff met with the local highway Maintenance Contractors in the Shuswap (JPW Contracting) to train their Quality Assurance Supervisors and 62 general staff on invasive plant ID and best practices for removal. Revelstoke and Golden highway contractors (Emcon Services) were invited to training events in Golden, but were unable to attend. Local Area managers with the Ministry of Transportation were also contacted regarding local invasive species issues. A 'Weeds and Roads' workshop co-hosted with the ISCBC and MOTI is planned for the spring of 2016.

In addition to these training events, CSISS staff delivered invasive plant training workshops to municipal parks, machine operators, and landscaping staff in Revelstoke, Golden and Sicamous, as well as the Shuswap Trail Alliance Trail Crew in Salmon Arm. The Salmon Arm municipal staff were not available for training in 2015, but expressed interest in training for 2016. These annual training sessions will be open to other regional stakeholders who are interested in Spring 2016.



Figure 8: Participants look for bio-control agents (left) and iPad mapping for priorities (right) at CSISS training workshops.



## FIRST NATIONS ENGAGEMENT

In 2015, CSISS staff developed new First Nations partnerships and collaborations, and continued to invite regional First Nations to events and training sessions (Figure 9). The CSISS Program Manager participated in a number of meetings with First Nations, including:

- Switzmalph Cultural Society Restoration Site visit with Val Janzen, ethnobotanist in the Shuswap;
- Invasive Species Forum presentations in Salmon Arm, including Switzmalph Cultural Society;
- Meeting with Revelstoke Aboriginal Education School District Coordinator;
- Shuswap Together Event with many First Nations groups and stakeholders;
- Akisqnuk First Nation Weed Management Workshop;
- Okanagan Indian Band Weed Management meeting; and
- Shuswap Trails Roundtable, First Nations participants included Splatstin, Neskonlith, Little Shuswap, and Adams Lake Indian Bands.

All First Nations within the CSISS region were phoned and emailed the invitation to our Annual General Meeting and Aquatic Invasive Species Forum. Any First Nations interested in participating in the CSISS or receiving training within the CSISS region are encouraged to contact CSISS staff.



Figure 9: Akisqnuk First Nation Weed Management Workshop (left) and Shuswap Trails Roundtable December 2015 (right).

## GOAL 3: PREVENT THE INTRODUCTION OF NEW SPECIES

The CSISS has been focusing on various behaviour change programs in partnership with others to help prevent the introduction of new species. The CSISS also provides training, resources and best management practices to partners in order to help prevent new introductions (*see Workshops and Events section above*).

### PLANTWISE PROGRAM

The CSISS continued to actively partner with the Invasive Species Council of British Columbia (ISCBC) to deliver the PlantWise Program, encouraging key groups such as the horticulture industry and consumers to commit to choosing and utilizing only native or non-invasive plants instead of their invasive alternatives.

From April to October 2015, CSISS staff delivered the PlantWise message to 86 community-based events speaking to youth, home gardeners, land managers, and stewardship groups directly reaching 2,331 individuals. Specifically, CSISS hosted a PlantWise workshop at a local garden centre to educate both staff and gardeners about invasive plant identification and the social, environmental and economic consequences of their establishment.

Additionally, the CSISS approached 18 garden centres and nurseries with the help of ISCBC's Peter Isaacson. Staff encouraged the horticulture industry to become PlantWise Certified and committing to selling only native or non-invasive plants to help prevent new invasives from establishing in the region. Through this initiative, the CSISS certified one garden center (Hanna and Hanna Orchards, Salmon Arm) and has the support and interest from ten others to complete certification training and workshops in 2016.

## CLEAN DRAIN DRY PROGRAM

In 2015, the CSISS expanded its Aquatic Invasive Species (AIS) programs, delivering the Clean, Drain, Dry message to youth, local residents, water stewardship and boating groups to help prevent the spread of aquatic invasive plants and organisms to BC waters.

The CSISS directly reached over 2,100 individuals at 78 community-based aquatic related events encouraging boaters to 'Clean, Drain, and Dry' all watercraft and equipment to help reduce the spread of aquatic invaders such as Zebra/Quagga mussels. In addition to attending aquatic related events, CSISS staff directly spoke with boaters at 30 boat launches and marinas across the region to encourage AIS prevention activities (Figure 10).

In partnership with the Ministry of Environment (MoE), the Invasive Species Council of British Columbia (ISCBC), and other regional Invasive Species Societies, the CSISS was able to develop and deliver Boater Surveys collecting relevant information on the movement and habits of watercraft owners across the province. This information is essential to improve local, regional and provincial aquatic invasive species initiatives to reduce the spread and introduction of aquatic invaders.

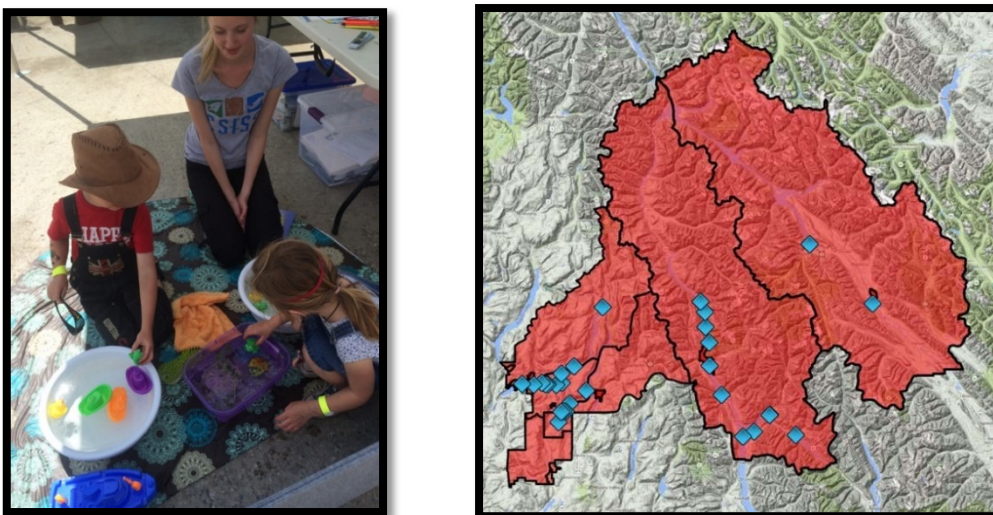


Figure 10: CSISS staff teaching children about Clean, Drain, Dry (left) and map of boat launches CSISS visited in 2015 (right).

## DON'T LET IT LOOSE PROGRAM

The 'Don't Let It Loose' program was released by the Invasive Species Council in summer 2015 to discourage pet owners from releasing potentially invasive pets into the wild (e.g. American Bullfrogs). The new program was promoted during applicable CSISS outreach events and presentations in 2015. A general public outreach campaign highlighting the DLIL program is planned by the CSISS for 2016. CSISS staff plan to visit all aquariums and pet stores in the region to determine if there are invasive species for sale, and distribute the Don't Let It Loose program message. As well, the CSISS plans to distribute this program message to schools in the region that may have school aquariums or classroom pets and develop regional Don't Let It Loose resources.

## PLAY, CLEAN, GO PROGRAM

In 2015, the CSISS partnered with Play, Clean, Go, a program encouraging youth, trail users, and recreational groups to practice proper trail etiquette by cleaning all equipment, clothing and pets when arriving at and leaving a recreational site to help reduce the spread and introduction of invasive species. Through strong partnerships with the Shuswap Trail Alliance, Parks Canada, the Equestrian Trail Association, cultural societies, community associations, cycling clubs, and naturalist clubs, the CSISS successfully delivered 28 Play, Clean, Go community presentations directly reaching 813 individuals (Figure 11). In 2016, CSISS plans to collaborate with trail and recreation groups to place signage and boot-brushes at high traffic trail heads, encouraging recreationalists everywhere to Play, Clean, Go and help reduce the spread of invasive species.



Figure 11: CSISS staff present the Play Clean Go Program at a Parks Canada event (left) and Volunteers learn proper trail practices at the Shuswap Trail Alliance's Annual Workshop (right).



## GOAL 4: MAXIMIZE THE PROBABILITY OF DETECTION AND ERADICATION OF NEW INVASIVES

The CSISS maximized the probability of detection and eradication of new invasives by raising public awareness and delivering invasive species workshops described above. Additionally, CSISS staff responded to invasive species reports and conducted terrestrial and aquatic targeted invasive species surveys on behalf of partner agencies.

### INVASIVE SPECIES REPORTS

In 2015, the CSISS responded to 41 Invasive species reports and noxious weed complaints. To handle these reports, an Invasive Species Reporting Protocol was developed to help CSISS staff respond in an appropriate manner (Stafl, 2014). Complaints and reports were received through the CSISS toll free number (1-855-785-9333), Report-a-Weed form on the CSISS website, in person, or through CSISS partners and members via e-mail. Depending on the nature and priority of the report, it was confirmed by a site visit and/or responded to with landowner extension, an outreach letter, or by enacting the provincial EDRR protocol. All invasive species reports were entered into the provincial Invasive Alien Plant Program<sup>1</sup> (Figure 12).

### TARGETED INVASIVE PLANT SURVEYS

In 2015, the CSISS focused on filling key information gaps on the presence, spatial extent, and distribution of priority invasive plants identified in the 2013 CSISS Operational Plan and through the priority lists of our partners (Craig 2013). All data was entered into the provincial Invasive Alien Plant Program (IAPP) database. IPads and GIS pro software were used to increase speed and efficiency of data entry in the field, to assist in navigation in the field, to increase ease of uploads to the IAPP data base, and to help quickly create and share maps with stakeholders.

A subset of CSRD properties were inventoried, as well as many priority locations along the Ministry of Transportation and Infrastructure Right-of-Way and important gravel pits.

In 2015, CSISS staff surveyed 171 new sites (Figure 12). In total 385 invasive plant survey records were entered into IAPP. In addition, CSISS staff entered 44 chemical treatment records, 8 chemical treatment monitoring records, monitored 8 sites for bio-agent dispersal, and entered 20 mechanical treatment records. Chemical treatments were carried out by a licensed applicator contracted by the CSRD. Mechanical treatments consisted of work done by landowners, volunteers at weed pulls, and CSISS staff at high priority sites during survey work.

The form is titled "IAPP Site & Invasive Plant Survey Record". It includes the following sections and fields:

- Header:** "Entered into IAPP (YYYY-MM-DD)", "By:", "Assigned Site ID: (recorded on this form)", and "Site ID: (assigned at IAPP data entry)".
- Site Details:**
  - Site Created Date (YYYY-MM-DD)
  - Invasive Plant Survey Date (YYYY-MM-DD)
  - Site ID: (assigned at IAPP data entry)
  - Jurisdiction: \* (see reverse for choices/codes)
  - District Lot No.:
  - Range Unit:
  - Site Paper File ID:
  - UTM Zone: \*
  - UTM Easting: \* (see reverse for codes)
  - UTM Northing: \* (see reverse for codes)
  - Site Soil Texture: coarse ☐ fine ☐ organic ☐
  - Slope: ☐ Aspect: ☐
  - Elevation (m):
  - Site Location (and directions how to get there):
  - Site Comments (anything else important / useful):
- Invasive Plant Survey Details:**
  - Survey Agency: \*
  - Employer:
  - Surveyor(s):
- Invasive Plants:**

Invasive Plants *	Area *	Distr. Code	Density Code	Survey Type *	Proposed Activity
species name or code	dimension or m²	(see reverse for codes)	(see reverse for codes)	County / Observational / Rescue	Man. Chem. Bio.
				C <input type="checkbox"/> O <input type="checkbox"/> P <input type="checkbox"/>	<input type="checkbox"/> <input type="checkbox"/> <input type="checkbox"/>
				C <input type="checkbox"/> O <input type="checkbox"/> P <input type="checkbox"/>	<input type="checkbox"/> <input type="checkbox"/> <input type="checkbox"/>
				C <input type="checkbox"/> O <input type="checkbox"/> P <input type="checkbox"/>	<input type="checkbox"/> <input type="checkbox"/> <input type="checkbox"/>
- Site Image Details:**
  - Date taken (YYYY-MM-DD):
  - Reference No. \*
  - Perspective: \*
  - Image Comments:

Figure 12: Example of an Invasive Plant Survey Record

<sup>1</sup> Invasive Alien Plant Program. Province of BC. <https://www.for.gov.bc.ca/hra/plants/application.htm>

A CSISS volunteer completed cursory surveys of approximately 17 new Knotweed sites in the Salmon Arm municipal area. CSISS staff will follow up for full IAPP inventories in the spring of 2016 and continue to work with the City of Salmon Arm staff on treatment planning. The CSISS also works with the Wildsight Golden Weed Coordinator and the Revelstoke City Operations staff to ensure that municipal invasive site records and treatment data is entered into IAPP.

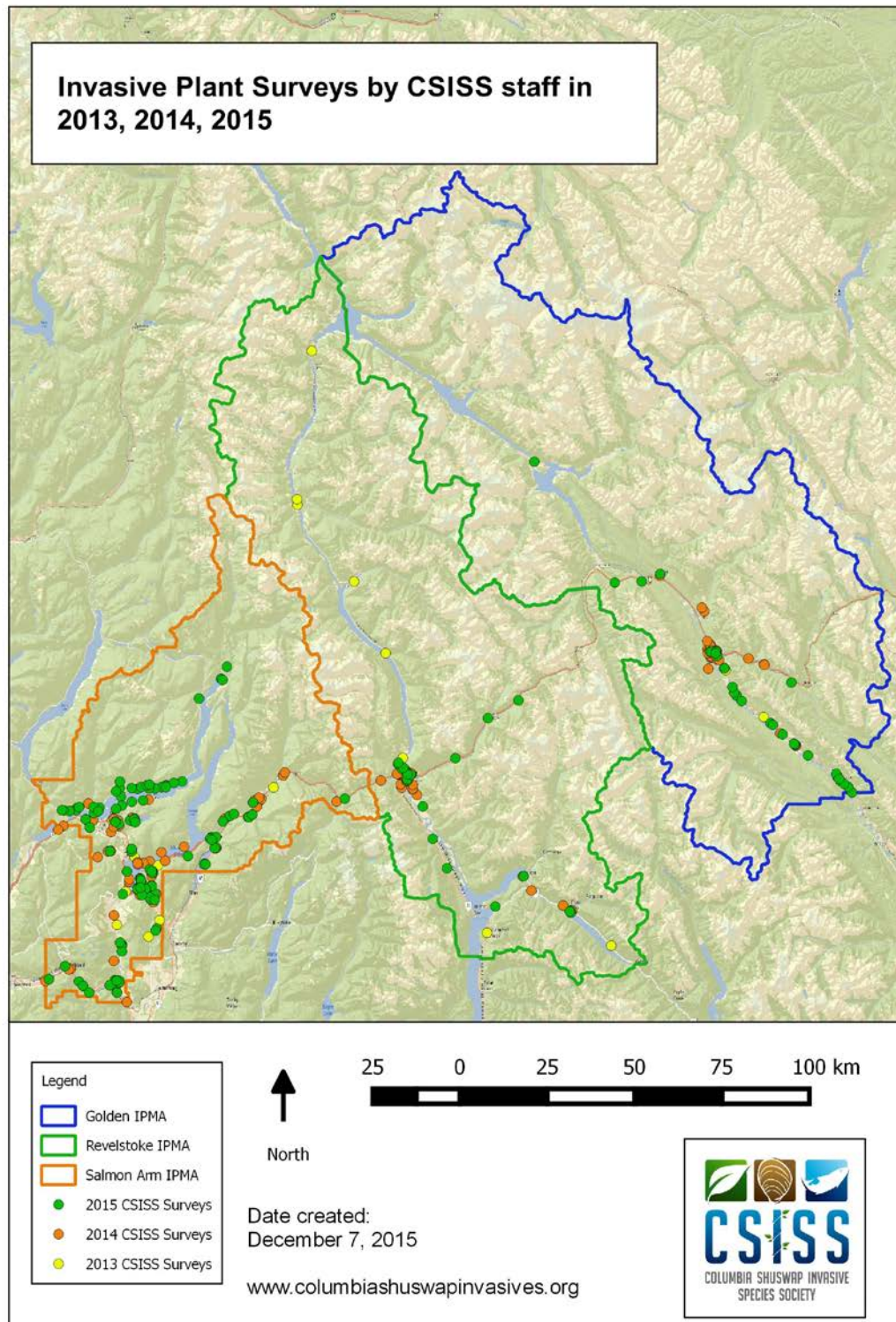


Figure 12: All invasive plant surveys completed by CSISS from 2013-2015 displayed by Invasive Plant Management Area (IPMA).



## SURVEYS OF CSRD OWNED LAND AND PROPERTIES

As part of the Society's important partnership with the CSRD, each year CSISS staff complete invasive plant inventories on CSRD properties (Figure 14). These sites include landfills, transfer stations and regional parks. In 2015, CSISS staff inventoried 24 CSRD properties, and completed 63 new invasive plant records on CSRD properties.

Most CSRD parks are well-maintained with few to no invasives found. For two park sites with noxious weeds, CSISS staff assisted CSRD staff with mechanical removal and plant identification.

In 2015, CSISS staff helped guide the work of the CSRD spray contractor. CSISS staff provided inventory records of landfill and transfer station sites as well as guidelines for completing treatment records. CSISS staff monitored approximately 30% of the 13 treated sites to determine treatment effectiveness.

CSISS staff entered all treatment and monitoring records into IAPP. There were a total of 44 chemical treatment records and 8 monitoring records.

To ensure quality extension service to landowners within the CSRD, the CSISS responded to several invasive species reports.

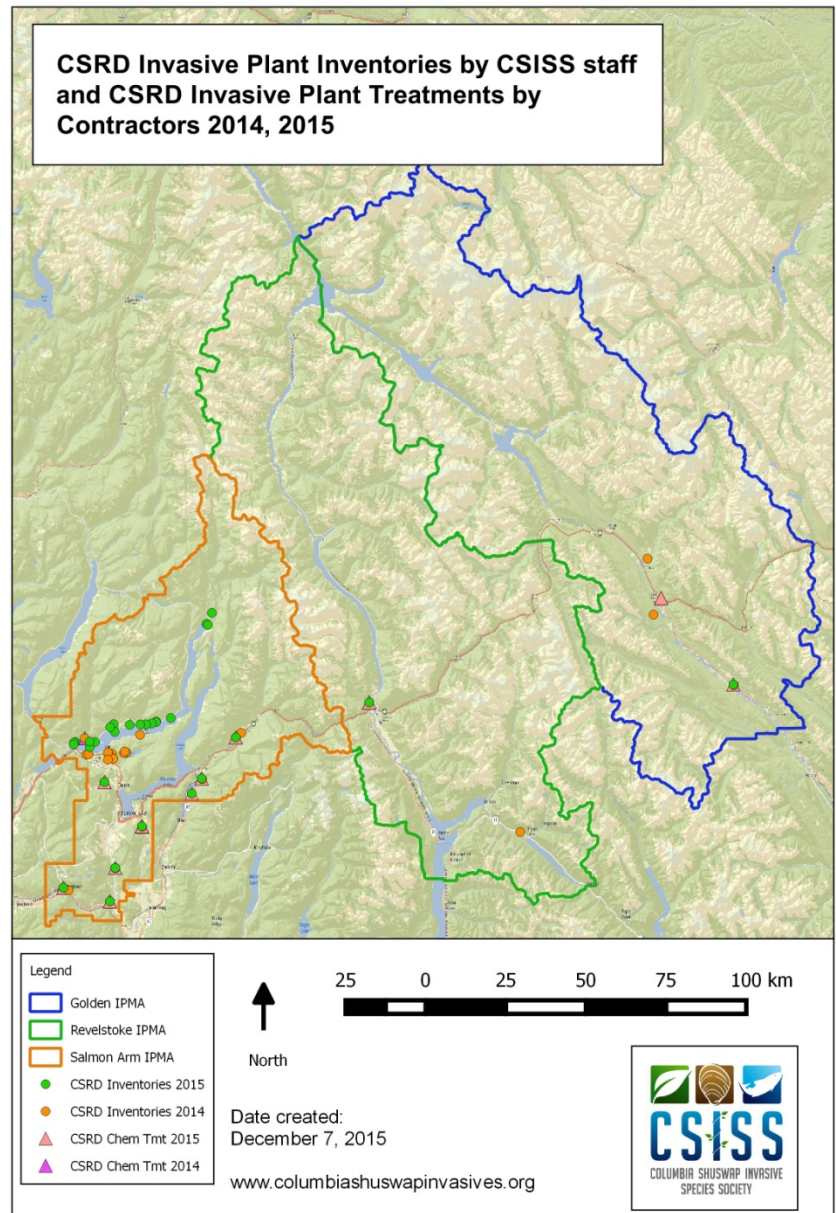


Figure 13: Surveys conducted by CSISS on CSRD properties in 2014 and 2015. Invasive plant treatments contracted by the CSRD at landfills and transfer stations are also shown.

## MINISTRY OF TRANSPORTATION AND INFRASTRUCTURE SURVEYS

CSISS staff completed high priority plant inventories on Ministry of Transportation and Infrastructure (MOTI) Right-of-Ways, and focused on completing inventories of active gravel pits in the region. A total of 176 plant records were completed on MOTI properties, including 124 records in 31 gravel pits (Figure 15). To date, CSISS staff have surveyed all active and planned active pits, except the Ben Hynes pit in the Golden IPMA. This pit was unsafe to access due to on-going MOTI operations. MOTI Road Managers and highway contractors helped provide the list of gravel pits for survey.

MOTI Right-of-Way inventories were targeted at plants listed in the CSISS EDRR and Eradication lists (Craig, 2013), as well provincially designated Noxious Weeds (BC Weed Control Act). CSISS staff inventoried new infestations of knotweed, Himalayan balsam, scotch broom, and rush skeletonweed. Sites containing purple loosestrife, bighead knapweed, and cypress spurge were also surveyed. In addition, CSISS staff completed preliminary surveys of spotted knapweed along Highway 97 south of Golden to determine relevant management recommendations, evaluate containment lines and ensure the shared border with the East Kootenay Invasive Species Council (EKISC) remains knapweed free.

CSISS staff contacted landowners adjacent to planned MOTI treatment sites with resources and information on best management practices for high priority species. This contact information was shared with MOTI for 2016 planning.

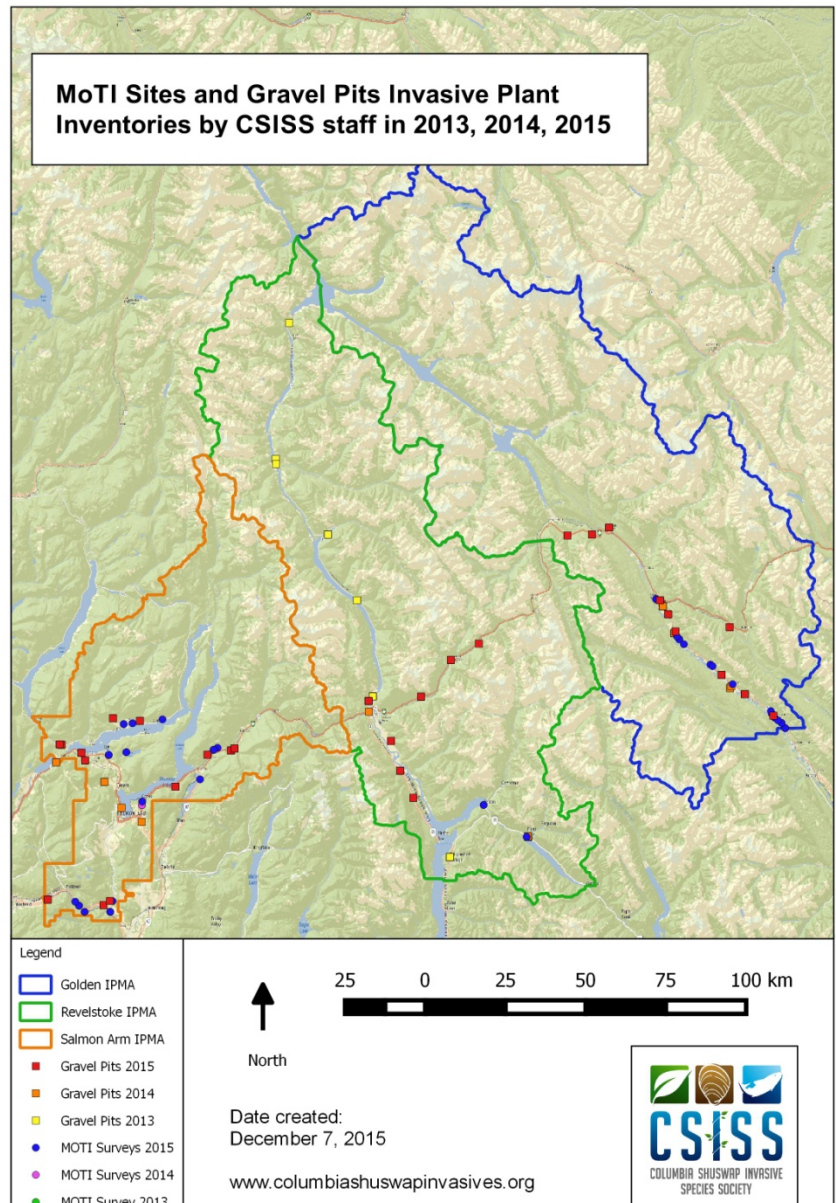


Figure 14: Surveys conducted by CSISS on Ministry of Transportation right-of-way and priority gravel pits.



## AQUATIC INVASIVE SPECIES SURVEYS

CSISS staff used the priority ranking matrix (Craig, 2105) to rank priority water bodies within the North Columbia to help focus survey and outreach efforts. To fill in key information gaps in AIS inventory, the CSISS hired Chris Harkness, a local AIS Contractor, to conduct aquatic invasive plant surveys and collect veliger samples to test for the presence of Zebra/ Quagga mussels in collaboration with the Ministry of Environment. In total, 22 Zebra/ Quagga Mussel veliger test samples were taken and multiple sites were surveyed at 100 m intervals for aquatic plants, at four priority water bodies in the Columbia Basin (Harkness, 2015). CSISS staff accompanied the contractor to assist with the surveys and learn how to properly collect samples (Figure 16).

Columbia Basin AIS lead, Khaylish Fraser has been working in close partnership with CSISS staff to design and deliver key AIS outreach, prevention and action targets outlined in the Strategy.

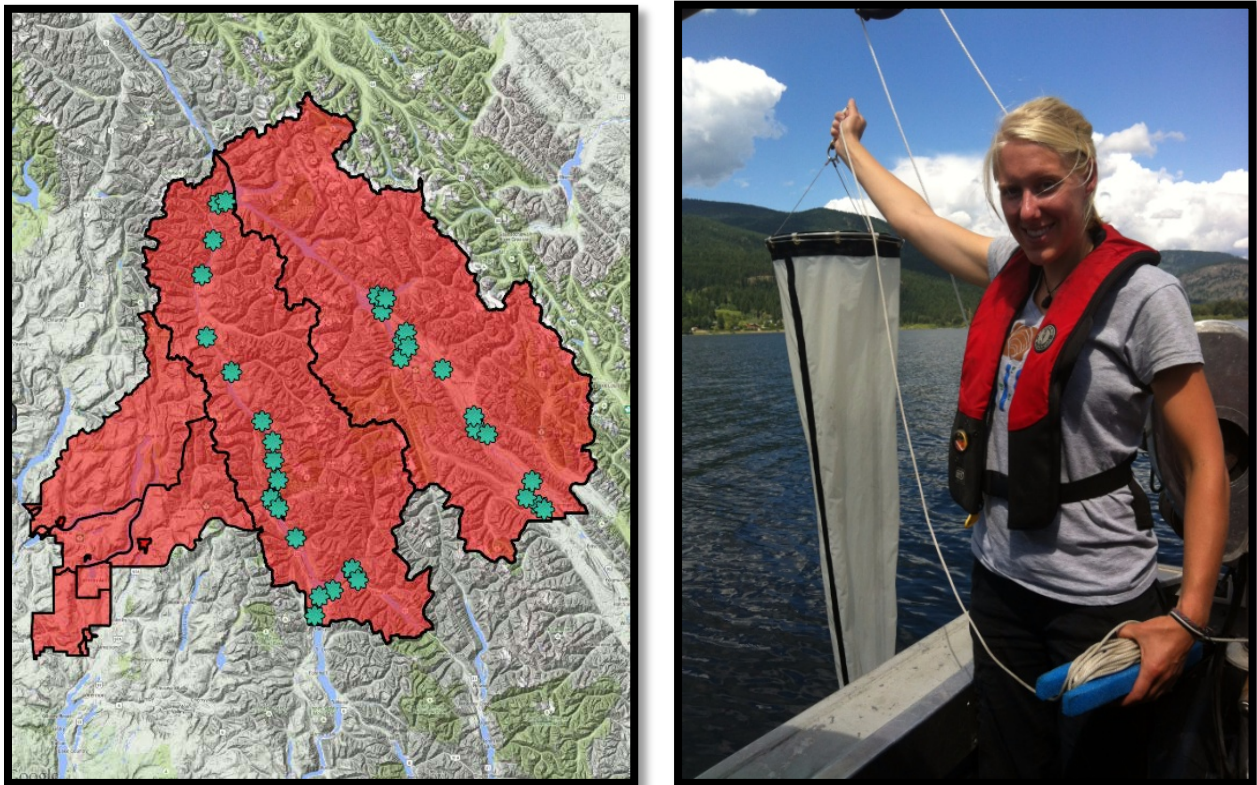


Figure 15: Sampling locations for AIS surveys carried out by the CSISS in 2015 (left); CSISS Program Assistant, Laura Gaster holds up a plankton tow net used for veliger sampling (right).

## GOAL 5: SLOW AND REVERSE THE SPREAD AND MINIMIZE THE IMPACT OF EXISTING INVASIVES

The CSISS works hard to slow and reverse the spread of existing invasives and reduce their impacts. This is done in coordination with CSISS partners by coordinating priorities for control, as well as having staff respond to reports in the region and engage with landowners.

Out of 41 invasive species reports, 18 noxious weed reports were brought to the attention of the CSISS (Figure 17). While the CSRD has enforcement abilities under the BC Weed Control Act to respond to noxious weed complaints, the CSISS responds to invasive species reports with landowner outreach and site inventories from the roadside. In addition to the reports received in 2015, six weed reports from the previous year were re-examined by CSISS staff who sent outreach letters to the landowners. All sites were visited by CSISS staff for IAPP inventories.

Of the 18 noxious weed reports, eight of the sites 1) did not contain listed noxious weeds, 2) pertained to a property with multiple jurisdictions or 3) were adjacent to untreated Crown Land. The other ten were found to contain listed regional or provincial noxious weeds. These landowners were either sent educational letters or were contacted in person or by phone by CSISS staff. Overall, seven of these properties were in compliance with the BC Weed Control Act and made noticeable, effective efforts to control invasive species on their properties.

During landowner interactions unrelated to noxious weed reports, CSISS staff delivered recommendations to 19 individuals on how best to control invasive species on their properties. Overall, five of these properties were in compliance with the BC Weed Control Act and made noticeable, effective efforts to control invasive species on their properties. Three Forestry companies (BCTS, LP Holdings, and Tolko) whose worksites contain priority invasive plants were also contacted. CSISS staff provided them with best management practices, relevant resources and maps.

The CSISS is working with local government staff to improve landowner outreach efforts and compliance associated with noxious weed complaints. Research into a more comprehensive invasive species bylaw is currently underway.

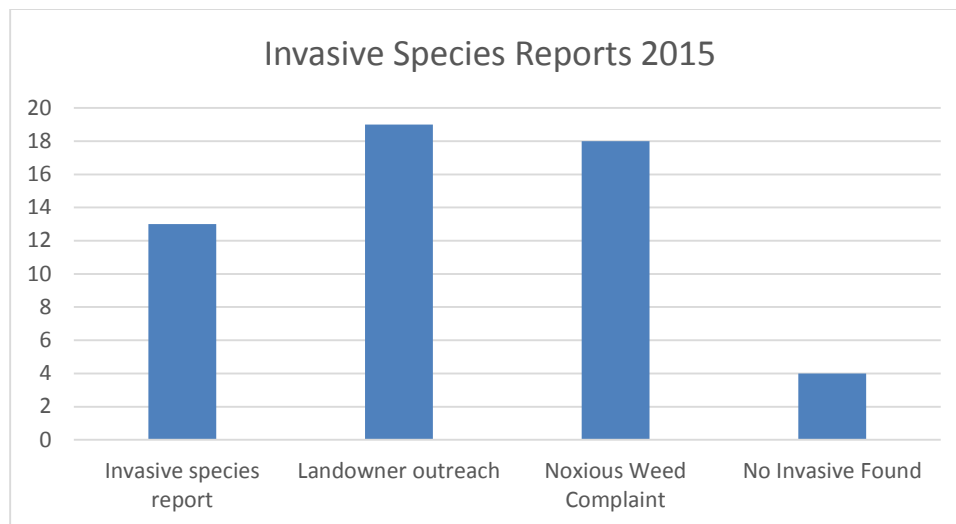


Figure 16: Invasive species reports received by CSISS in 2015, broken down by category.



## GOAL 6: PROGRAM SUSTAINABILITY

During the 2015 season, the CSISS gratefully received increased support for invasive species related programming in the region. The CSISS received funds from the Ministry of Forests, Lands and Natural Resource Operations (MFNLRO) and the Ministry of Transportation and Infrastructure (MOTI). In addition to funding from the provincial government, the CSISS confirmed multi-year funding agreements from both the Columbia Shuswap Regional District (CSRD) and the Columbia Basin Trust (CBT).

Additional funding sources are being pursued for the 2016 season. A grant application has been submitted to the Fish and Wildlife Compensation Program (FWCP) to expand AIS programming in the region and there are plans to seek funding for community initiatives from BC Hydro.

The CSISS staff team expanded in 2015. Two returning staff members were joined by a new Program Assistant and Summer Student who helped greatly enhance the level of service the CSISS was able to deliver in the region (Figure 18). Retaining a quality staff team is important for the CSISS which has thus far been exceptionally successful with new and returning staff dedicated and passionate about facilitating positive change.

Similarly, the CSISS has been fortunate to have received direction from a knowledgeable, diverse Board of Directors. Each individual brings a unique perspective to the organization and has been instrumental in helping the CSISS address many aspects of invasive species management in the region.

A complete Policy Manual has been put together by the CSISS Executive Director to facilitate orientation of new staff and directors (Stafl, 2015). This will be reviewed by the Directors annually and updated as necessary. CSISS staff have created and maintained an Outreach Framework 2015-2020. This framework informs CSISS outreach targets, performance measures, staff work plans, calendars for specific outreach programming, and helps to determine gaps in stakeholder groups (Hooper et al. 2015).

Thanks to the financial support of our funders, the CSISS was able to acquire a new vehicle (2015 Toyota Rav4) which greatly enhanced the organization's exposure and ability to safely travel in and around the region to deliver invasive species programming.



Figure 17: A) CSISS Staff members (from left to right) Laura Gaster, Program Assistant, Emily Spiler, Summer Student, and Robyn Hooper, Program Manager. Not pictured, Natalie Stafl, CSISS Executive Director. B) The new CSISS vehicle ready to transport staff across the region.

## REFERENCES

Craig, J.A. 2013. Columbia Shuswap Invasive Specie Society Strategic Plan 2013-2017. Prepared for the Columbia Shuswap Invasive Species Society.

Craig, J.A. 2013. Operational Plan for Terrestrial Invasive Plants in the Columbia Shuswap 2014 to 2019. Prepared for Columbia Shuswap Invasive Species Society.

Craig, J. A. 2015. Canadian Columbia Basin Regional Framework for an Aquatic Invasive Species Program: 2015 to 2020.

Harkness, C. 2015. North Columbia Priority Aquatic Invasive Species Surveys. Prepared for the Columbia Shuswap Invasive Species Society.

Hooper, R, Stafl, N., Gaster, L., Spiler, E., Gibson, M. and Rooney, D. 2015. CSISS Outreach Framework 2015-2020. Prepared for the Columbia Shuswap Invasive Species Society.

Stafl, N. 2014. CSISS Invasive Species Reporting Protocol. Prepared for the Columbia Shuswap Invasive Species Society.

Stafl, N. 2015. CSISS Policy Manual Version 2. 0. Prepared for the Columbia Shuswap Invasive Species Society.

## APPENDIX A: CSISS STAFF AND BOARD DIRECTORS 2015

### Current CSISS Board Directors (October-Present 2015)

<b>Hamish Kassa</b>	Chair, CSISS	Columbia Shuswap Regional District
<b>Chris Cochran</b>	Vice-Chair, CSISS	Town of Golden
<b>Margaret Gibson</b>	Secretary, CSISS	Independent Biologist
<b>Bruce Husband</b>	Board Directors, CSISS	Shuswap Agricultural Strategy Group
<b>Bryan Chruszcz</b>	Board Directors, CSISS	Parks Canada
<b>David Rooney</b>	Board Directors, CSISS	Illecillewaet Greenbelt Society
<b>Adam Croxall</b>	Board Directors, CSISS	BC Hydro
<b>Darren Komonski</b>	Board Directors, CSISS	City of Revelstoke
<b>Diane Millar</b>	Board Directors, CSISS	Ministry of Forests, Lands and Natural Resource Operations

### 2014-2015 CSISS Board

<b>Hamish Kassa</b>	Chair, CSISS	Columbia Shuswap Regional District
<b>Chris Cochran</b>	Vice-Chair, CSISS	Town of Golden
<b>Joyce deBoer</b>	Treasurer, CSISS	Wildsight Golden
<b>Margaret Gibson</b>	Secretary, CSISS	Independent Biologist
<b>Catherine MacRae</b>	Board Directors, CSISS	Ministry of Forests, Lands and Natural Resource Operations
<b>Bryan Chruszcz</b>	Board Directors, CSISS	Parks Canada
<b>David Rooney</b>	Board Directors, CSISS	Illecillewaet Greenbelt Society
<b>Adam Croxall</b>	Board Directors, CSISS	BC Hydro
<b>Darren Komonski</b>	Board Directors, CSISS	City of Revelstoke
<b>Bruce Husband</b>	Board Directors, CSISS	Shuswap Agricultural Strategy Group

### **CSISS Staff 2014**

Natalie Stafl	Executive Director, CSISS
Robyn Hooper	Program Manager, CSISS
Laura Gaster	Program Assistant, CSISS
Emily Spiler	Summer Student, CSISS

## APPENDIX B: EVENTS ATTENDED BY CSISS 2015

*Events highlighted in grey pertain to the Columbia Basin Region of the CSISS Area*

Date	Event	# of	# Direct Interactions
17/Feb/15	Meet with Federal MP David Wilks	3	3
19/Feb/15	Year End Report to CSRD Board	30	30
9/Mar/15	Gardom Lake Planning Committee Presentation	20	20
11/Mar/15	Sicamous Career Fair	40	40
26/Mar/15	Meeting Regarding COs in Revelstoke	8	8
1/Apr/15	Presentation to Rod & Gun Club	16	16
8/Apr/15	Shuswap Trail Alliance Meeting	3	3
8/Apr/15	CSRD Parks and Landfills Meeting	3	3
10/Apr/15	Sicamous Secondary School	13	13
11/Apr/15	Shuswap Trail Alliance Trail Building: Canoe	16	16
15/Apr/15	Meeting with Aboriginal Educator School District 19	1	1
16/Apr/15	EKIPC AGM	25	25
18-Apr-15	Shuswap Trail Alliance Trail Building: White Lake to Blind Bay	12	12
19-Apr-15	EQ Trail Association: Trail Maintenance	25	25
23-Apr-15	Earth Day Tree Plant, Revelstoke	115	115
25-Apr-15	Shuswap Trail Alliance: Youth Trail Day	79	79
26-Apr-15	CBEEN Leadership Clinic	30	10
26-Apr-15	Shuswap Trail Alliance: Trail Blitz Day	50	50
28-Apr-15	OASISS AGM	25	25
29-Apr-15	OASISS Field Day	35	35
5-May-15	Revelstoke Municipal Staff Plant ID training	4	4
6-May-15	Revelstoke Municipal Staff Plant ID training (Day 2)	7	7
11-May-15	Salmon Arm City Council Delegation	20	20
11-May-15	Shuswap Naturalist Club	3	3
11-May-15	Shuswap Wild Wonders - School Camp	45	45
14-May-15	Alexander Brown Elementary School	50	50
14-May-15	Golden Cycling Club	1	1
16-May-15	Falkland Stampede	200+	36
17-May-15	Golden Mountain Festival	200	60
19-May-15	Golden Town Council Delegation	20	20
19-May-15	Meeting with Wildsight Program Manager Rachel Darvil	1	1
20-May-15	Girl Guides Presentation: Salmon Arm	23	23
21-May-15	Cedar Hills Breakfast Club: Presentation	10	10
22-May-15	Shuswap Farm and Craft Market	50+	27
22-May-15	Family Fun Ride: Salmon Arm	50	35
23-May-15	Carlin Country Market	150	55
25-May-15	Eagle River Secondary School	26	26
26-May-15	Shuswap Wild Wonders: School Camp	54	54
27-May-15	SABNES Nightshade Weed Pull	12	12
27-May-15	Sicamous City Council Delegation	10	10
27-May-15	Sunnybrae Community Association: Presentation	15	15
27-May-15	Screen Smart Event: Revelstoke	7	7
28-May-15	Sicamous Plant ID Training	8	8

28-May-15	Switzmalph Cultural Society Restoration site tour with	1	1
28-May-15	Invasive Species Forum - hosted by WATER With presentations	26	26
28-May-15	Landowner extension with Val at Salmon Arm Golf Club	3	1
29-May-15	Bastion Elementary Presentation	55	55
29-May-15	Wildsight Revelstoke Youth Tree Plant Stewardship Event	30	30
30-May-15	Revelstoke Farmer's Market	250	56
31-May-15	Scotch Creek Farmer's Market	45	23
2-Jun-15	Akisqnuk Weed Management Workshop	26	26
3-Jun-15	Shuswap Wild Wonders: School Camp	55	55
4-Jun-15	Golden Plant ID workshop	10	10
5-Jun-15	CBEEN Environmental Evaluation Workshop and World	110	30
5-Jun-15	Little White Lake: YFI Community Weed pull	15	15
7-Jun-15	Friends of Gardom Lake: YFI Community Weed Pull	12	12
7-Jun-15	Shuswap Spring Fishing Derby	40	40
9-Jun-15	Salmon Arm Secondary School	60	60
10-Jun-15	Together Shuswap: Building Bridges for a Better Future	107	23
10-Jun-15	JPW Road and Bridge Contractors	62	62
13-Jun-15	Hanna & Hanna Garden Centre Workshop	8	8
14-Jun-15	S.A. Wharf, Marine Park boat launch	40	20
15-Jun-15	Plant ID workshop – Castlegar (Two days: 15-16)	20	20
17-Jun-15	Shuswap Trail Alliance: Social Responsibility Day Gr. 8	20	20
17-Jun-15	Shuswap Regional Trails Strategy	40	10
17-Jun-15	Equestrian Trails Association at Kalhani Park	8	8
18-Jun-15	Lady Grey Elementary School Presentation	17	17
20-Jun-15	Salmon Arm: Dragon Boat Festival	200	30
21-Jun-15	Father's Day Fishing Derby & Aboriginal Day Celebration	25	25
21-Jun-15	Williamson Lake Fishing Derby	85	15
24-Jun-15	Golden Farmer's Market	60	10
30-Jun-15	EKIPC Aquatic Plant ID Workshop	10	10
1-Jul-15	Canada Day Farmer's Market Golden	150	45
1-Jul-15	South Shuswap/Blind Bay Canada Day	100	30
4-Jul-15	Blind Bay Farmer's Market	30	5
9-Jul-15	CSISS Bio-control Workshop	14	14
10-Jul-15	Columbia Basin AIS Press Conference	20	10
11-Jul-15	Shuswap Garden Club Annual Flower Show	40	15
15-Jul-15	Communities in Bloom: Salmon Arm	15	5
16-Jul-15	AIS Outreach- Marinas and Boat Launches Salmon Arm	20	20
20-Jul-15	Wildsight Golden- Kids Camp	8	8
17-Jul-15	Parks Canada- Learn to Camp	76	76
18-Jul-15	AIS Outreach- Marinas and boat Launches: Revelstoke	19	19
18-Jul-15	Sicamous Burnout & Summer Stomp Event	100	12
21-Jul-15	AIS Outreach to 3 Marinas / Rental Shops: Sicamous	5	5
23-Jul-15	Garden Centre Outreach across CSRD at multiple locations	20	20
25-Jul-15	Wildsight Golden- Weed Pull	10	10
5-Aug-15	Celista Farmer's Market	100	23
5-Aug-15	Landowner extension in North Shuswap and with JPW staff at	4	4
8-Aug-15	Sicamous Antique Boat Show	200	67

8-Aug-15	Shuswap Marina Open House	50	9
15-Aug-15	Salmon Arm Roots & Blues Fest (3 days: Aug 14-16)	400	56
20-Aug-15	Meeting with NORD, MOTI and Okanagan Indian Band	4	4
22-Sep-15	CSISS AGM	31	31
22-Aug-15	Golden Garden Tour	22	15
29-Aug-15	Sorrento Farmers Market	100	34
3-Sep-15	Trout Lake Boater Outreach	3	3
10-Sep-15	Probus Group Presentation: Blind Bay	55	55
11-Sep-15	Salmon Arm Fall Fair	500	27
12-Sep-15	Revelstoke Timber Days	200	5
13-Sep-15	Falkland Harvest Festival	75	65
16-Sep-15	CKISS AGM- Creston	20	150
19-Sep-15	Axis Mundi Festival	200	25
25-Sep-15	Kokanee Fish Festival	150	15
5-Oct-15	Girl Guides- Blind Bay	25	50
13-Oct-15	Local Food Initiative Plant Sale	15	75
16-Oct-15	Salmon Arm Secondary	50	15
20, 21, 22	North American Invasive Species Management Association	125	15
16-Nov-15	Salmon Arm City Council Meeting on Knotweed	15	75
26-Nov-15	Revelstoke Volunteer Fair	50	15
2-Dec-15	Shuswap Trails Roundtable	75	75
<b>TOTAL</b>	<b>COLUMBIA BASIN</b>	<b>2,072</b>	<b>1,078</b>
<b>TOTAL</b>	<b>CSRD</b>	<b>6,221</b>	<b>2,960</b>



## APPENDIX C: MEDIA EVENTS HIGHLIGHTING CSISS 2015

Date	Publisher	Headline
19-Feb-15	Revelstoke Current	MP Learns About Invasive Species
31-Mar-15	Revelstoke Mountaineer	\$1.3 million invaders plan: Mussels 'big threat' to Columbia River, dam system
31-Mar-15	Revelstoke Current	Province acts to prevent zebra mussels' invasion
08-Apr-15	Salmon Arm Observer	Help clean up Shuswap trails
17-Apr-15	CBEEN	CBEEN Member Feature: Robyn Hooper
22-Apr-15	The Morning Star	Invasive Species Focus of Government Funding
04-May-15	The Kicker	What's Invading Your Garden?
22-May-15	Salmon Arm Market News	Local Forum to Address Invasive Species
25-May-15	Lakeshore News	Events - Local Forum to Address Invasive Species
25-May-15	Society for Ecological Restoration	Events - Local Forum to Address Invasive Species
26-May-15	The Columbia Valley Pioneer	Weed Workshop
03-Jun-15	Revelstoke Mountaineer	Invaders are second biggest threat to Revelstoke area biodiversity
11-Jul-15	Revelstoke Mountaineer	How experts use biocontrol as an alternative to herbicides
12-Jul-15	Revelstoke Current	New resources for the fight to keep zebra mussels out of BC
13-Jul-15	The Townsman	Funding to fight invasive mussels
17-Jul-15	Kootenay Advisor	Invasive species mobile inspection unit to be based in Cranbrook
05-Aug-15	Revelstoke Mountaineer	Your Backyard Nightmare False Bamboo is True Knotweed
07-Aug-15	Salmon Arm Observer	Weeding out Knotweed
01-Sep-15	The Kicker	Your Backyard Nightmare False Bamboo is True Knotweed
06-Sep-15	Revelstoke Current	Invasive Species Society to hold a major symposium
13-Sep-15	The Morning Star	Invasive species discussed
22-Oct-15	Revelstoke Times Review	Invasive Grey Squirrel Captured in Revelstoke
30-Oct-15	Friday AM	Knotweed in Salmon Arm
03-Nov-15	Voice of the Shuswap	Invasive Species in the Shuswap - Radio Interview
03-Nov-15	Revelstoke Current	CSISS highlighted at North American Invasive Species Association Conference
26-Nov-15	Columbia Basin Trust	Underwater Invaders
26-Nov-15	Castanet Kelowna	Preparing for the worst
3-Dec-15	Salmon Arm Observer	Knotweed Gains Ground

## APPENDIX D: COLLABORATION, WORKSHOPS AND TRAINING OPPORTUNITIES ATTENDED OR HOSTED BY CSISS

- Monthly conference calls/ meetings with Columbia Basin invasive species groups
- Monthly conference calls with BC Regional Invasive species groups
- Participation in Invasive Species Month planning
- Invasive Species Webinars for training purposes, e.g. ISCBC Webinars, Green Teacher webinars
- Coordination calls with ISCBC for PlantWise and Clean, Drain Dry Programs
- GIS and iPad training for data collection in the field (hosted by CSISS)
- Watercraft Inspection and Decontamination Training
- CBEEN Leadership Clinic (Columbia Basin AIS Strategy with EKISC and CKISS)
- Aquatic Plant ID Training (hosted by EKISC)
- Terrestrial Plant ID Training (hosted by CKISS)
- Invasive Plant Management Workshops for Municipal staff, Conservation Officers; and Highways staff (organized by CSISS)
- Delegations to new City Councils (Salmon Arm, Sicamous, Revelstoke, Golden) and special Council meeting on Knotweed in Salmon Arm
- Invasive Species Forum with Wetland Ecological Restoration (WA:TER) stewardship group, Switzmalph Cultural Society, Shuswap Trail Alliance, and CSISS Program Manager key note speaker
- First Nations meetings (Switzmalph Cultural Society Restoration Site visit; Meeting with Revelstoke Aboriginal Education School District Coordinator; Shuswap Together with many First Nations groups and stakeholders; Akisqnuk First Nation Weed Management Workshop hosted by Akisqnuk, EKISC and CSISS; and Okanagan Indian Band Weed Management meeting with OIB, North Okanagan Regional District and CSISS)
- Aquatic Invasive ID Workshop (hosted by EKISC)
- Bio-Control Workshop (hosted by CSISS)
- EKISC, CKISS and OASISS AGMs
- Regional Committee Field Tour and Annual Meeting
- CBEEN Evaluating Environmental Education Workshop
- Certified Industrial Vegetation Applicators' Course (hosted by CSISS)
- Aquatic Invasive Species Symposium and CSISS AGM
- North American Invasive Species Management Association (NAISMA)
- Invasive Species Council of BC Annual Forum
- Shuswap Trail Strategy Roundtable (hosted by Fraser Basin Council and Shuswap Trail Alliance)